



GRAVEL Tour Hlinsko 2026

Gravel World series race

Race Regulations

<u>Organizer:</u>	CK MTB Maraton z.s., Fügnerova 858, 539 01 Hlinsko
<u>Location:</u>	Hlinsko – Olšinky multi-sport areal (49.7599597N, 15.9092033E)
<u>Race date:</u>	Saturday, August 1, 2026
<u>Director:</u>	Petr Svoboda mobile: 731 029 990 e-mail: brudr.sport@seznam.cz
<u>Race Secretary:</u>	Jana Svobodová mobile: 777 154 521 e-mail: j.scheerova@seznam.cz
<u>Course Marshall:</u>	Pavel Svoboda mobile: 777 623 910 e-mail: sipita@seznam.cz
<u>Race Doctor:</u>	MUDr. mobil:
<u>ČSC Chief Commissaire:</u>	Karel KAŇKA, CZE
<u>Registration, Entry Fee Payment:</u>	Registration instructions can be found at ptime.cz . Follow the competition schedule and race regulations; monitor updates at: https://ucigravelworldseries.com/en/gravel-tour-hlinsko/ and https://www.graveltour-hlinsko.cz/ . Registration and payments close on July 29, 2026, at 12:00 PM. An unpaid registration is invalid. On-site registration on the day of the race will not be possible.
<u>Entry Fee:</u>	Registration and payment by May 30, 2026: 1,500 CZK / 60 € Registration and payment by June 30, 2026: 1,750 CZK / 70 € Registration and payment by July 29, 2026: 2,250 CZK / 90 €
<u>Race office, Registration:</u>	Football clubhouse in areal (Plan 2).

Race Numbers: Distribution of race numbers and registration check-in will take place at the race office on **July 30, 2026, from 4:00 PM to 7:00 PM** and on **August 1, 2026, from 8:00 AM to 10:00 AM.**

<u>Categories:</u>	ELITE MEN	131 km
	ELITE WOMEN	131 km
	Men / Women 19 - 34	131 km
	Men / Women 35 - 39	131 km
	Men / Women 40 - 44	131 km
	Men / Women 45 - 49	131 km
	Men 50 - 54	131 km
	Men 55 - 59	131 km
	Men 60 +	88 km
	Women 50 +	88 km
	Other categories per 5years	88 km
	Men / Women OPEN 18+	88 km

Conditions of Participation:

Every racer must hold a valid license from their national federation. Riders in the OPEN category are unregistered and do not present a license.

The use of a protective helmet is mandatory.

Racers must sign the start signature sheet at the start. Any racer who has not signed will not be classified.

Race Course: The Start and Finish are located next to the Olšinky multi-sports areal.

1st Lap (88 km) (Plan 1)

Hlinsko –Blatno - Dědová – Pleskotka – Čachnov – Pustá Kamenice – Damašek – České Křižánky – Česká Cikánka – Karlštejn – Svratouch – Filipov – Paseky – Chlumětín – Svratka – Herálec – Český Herálec – rybník Krejcar - Rejha – Lány – Lhoty – Vortová – rybník Malý Černý – Krucemburk – Chlum – Studnice - Hlinsko

2nd Lap (43km)

Hlinsko – Blatno – Pláňavy – Dědová – Filipov – Paseky – Chlumětín - rybník Krejcar - Rejha – Lány – Lhoty – Vortová – rybník Malý Černý – Krucemburk – Chlum – Studnice - Hlinsko

Unmaintained roads, field and forest paths, smooth asphalt max. 15 %.

Food and Technical Station: The zones will be located on the course, equipped with basic tools for potential mechanical issues.

Team Depos: Spaces for team depots will be recommended by the organizer.

Progam:

Friday, July 31: **16:00 - 19:00 Registration, race office at the area**
17:00 - 18:00 Competition committee meeting with riders' representatives

Saturday, August 1: **09:00 - 11:00 Registration, race office at the area.**
12:00 START ELITE Men

12:02	START Men 19-34, Masters 35-39, 40-49, 50-54, 55-59
12:12	START ELITE Women
12:14	START Women 19-34, 35-39, 40-44, 45-49
12:16	START other categories (short course) categories
18:00	Award Ceremony

Regulations:

The race is held according to UCI GRAVEL rules and these regulations. Only gravel bikes with UCI regulations may be used in gravel races:

<https://assets.ctfassets.net/761l7gh5x5an/6a33Mfg59CDEjJVGFN1eJB/4daa377ad55586e5f1126546f046f16a/1-GEN-20250616-E.pdf>.

Random inspections of technical specifications of the bicycles will be conducted by a designated member of the Commissaire Panel.

<https://assets.ctfassets.net/761l7gh5x5an/4nj0eMn8dOZa37oOfbowBm/074e1d5411d67fd5f71ddb9239d63c81/15-CPT-20220101-E.pdf>

Every racer participates at **their own risk** and at their own expense (or the expense of their team/club). The organizer is not liable for damages incurred by racers or caused by them. On road sections, racers are obliged to comply with the provisions of Act 361/2000 Coll. Racers are required to follow the instructions of the organizer, commissaires, and police.

Timing:

Results service is provided by ptime.cz

Prices:

Will be awarded to the top three racers in each designated category according to the following schedule. Cash prizes will be paid in cash at the race office after the official award ceremony.

Price money:	1.	2.	3.
ELITE Men	400 €	300 €	200 €
ELITE Women	400 €	300 €	200 €
All other categories – value physical prizes			

Medical Assistance:

RZS Pardubice, ČR, Poliklinika Hlinsko.

Nearby Hospitals:

Chrudim Hospital

Doping control:

Located in the Football Club building. (**Plan 2**)

**Changing Rooms:
and Showers:**

Located at the stadium complex (**Plan 2**).

Parking:

Central parking – SKI resort Hlinsko (**49.7565692N, 15.8980636E**)
(**Plan 3**)

Other:

Accommodation:

Not provided by the organizer; if needed, contact TIC Hlinsko. e-mail: ic@hlinsko.cz, mobile:731 697 418

Link: <https://www.ic-hlinsko.cz/ubytovani/>

GDPR:

The organizer will handle racers' data and records responsibly, based on EU decisions. By signing the registration sheet, each participant agrees to the processing of personal data in connection with organizational legislation and acknowledges that photographs or audiovisual recordings will be taken for reporting purposes of the GRAVEL World Series 2026 – Gravel Tour Hlinsko.

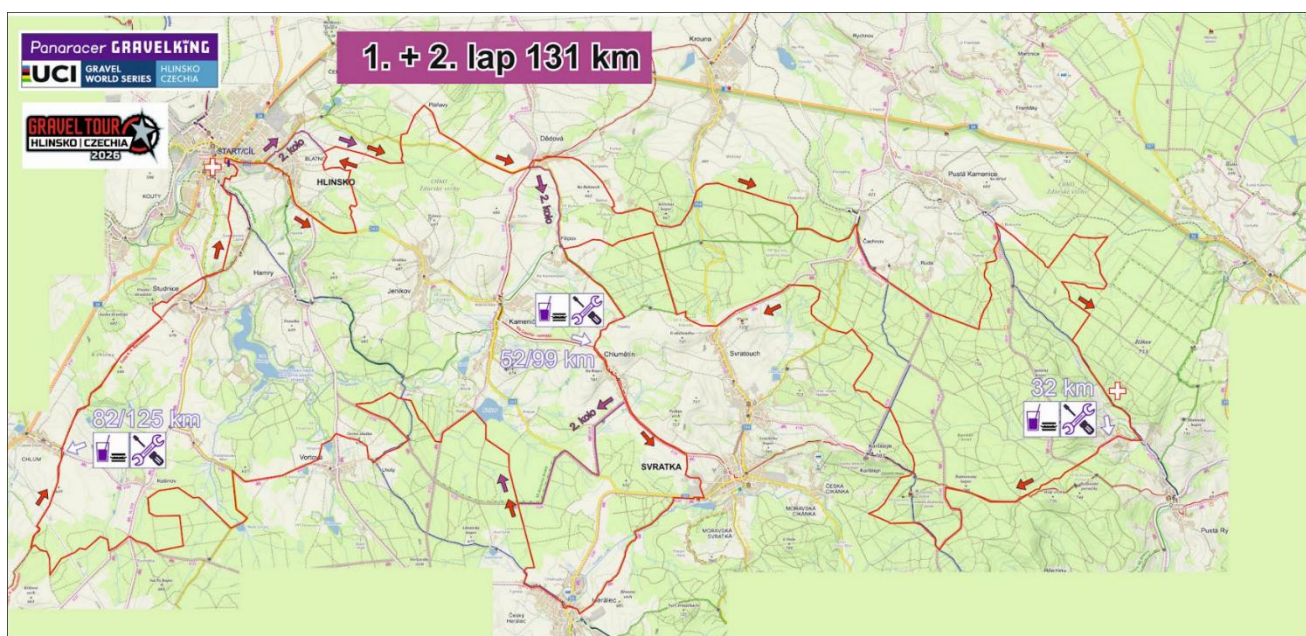
By signing the registration or check-in sheet, racers confirm their agreement with these regulations.

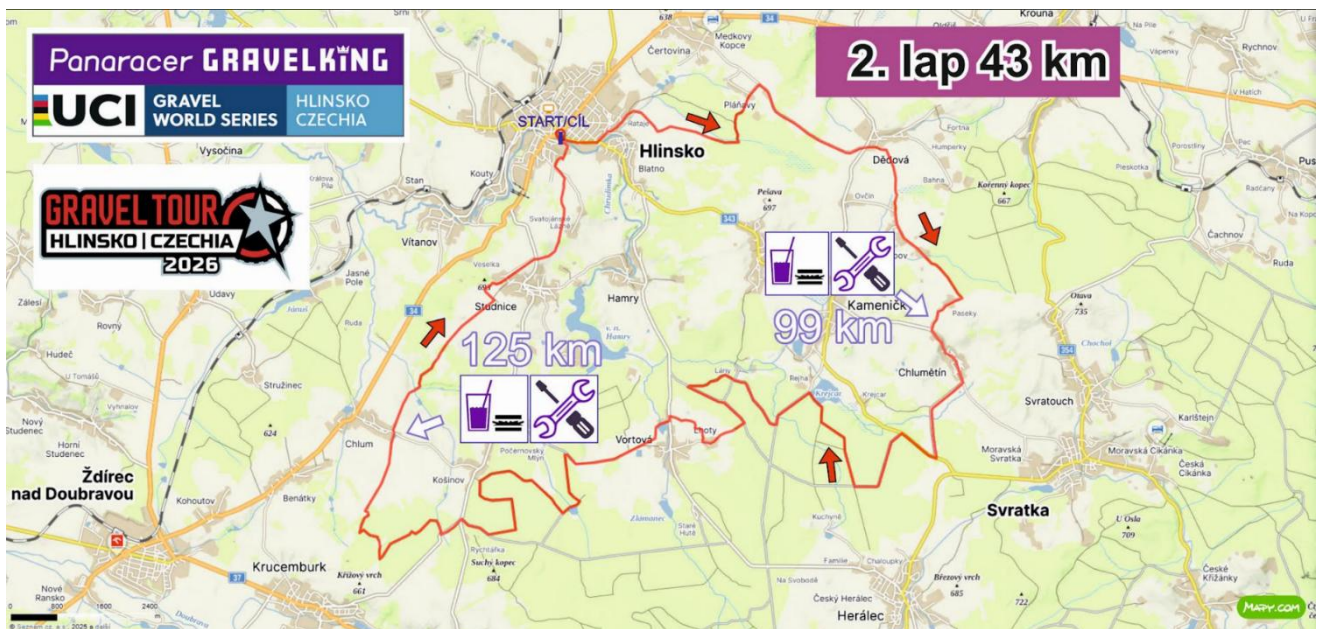
Approved by:

Jiří Štátný for the ČSC Cyclocross Commission on January 22, 2026.

Attachments:

Plan 1 – Race map





Plan 2 – Facilities



Plan 3 – Parking



Plan 4 – Start location



Plan 5 – Entry into the second lap and the finish.

